



Vilaagam

@AMEENPUR



Luxury Living
at Its **Finest.**



Luxury Living at Its Finest

Welcome to **Vilaasam**, where sophistication meets comfort in the heart of the city. Our exquisite residential community offers an unparalleled living experience, designed to exceed your every expectation.

Discover a world of elegance, tranquility, and convenience as you step into our meticulously crafted apartments. Let us take you on a journey through the features and amenities that make **Vilaasam** the perfect place to call home.





At **Vilaasam**, we believe in providing a haven of opulence and tranquillity amidst the bustling cityscape. Our apartments are thoughtfully designed to blend contemporary aesthetics with functionality, creating a harmonious living space for our esteemed residents. Each apartment boasts spacious layouts, stylish interiors, and a range of premium finishes to create an atmosphere of refined luxury.

Block 1



Block 1



AREA STATEMENT: BLOCK 01

Total Plot Area : 854 sq.yds.
 No. of Floors : Parking + 5 Floors

Setbacks : 3 m & Sides: 3.5 m
 Area of Each Floor : 5,200 sq.ft.
 Area of 5 Floors : 26,000 sq.ft.
 *25% Common Area

Flat 1
Block 1



East Facing
2 BHK
1,100 sq.ft.

Flat 2
Block 1



East Facing
3 BHK
1,500 sq.ft.

Flat 3 Block 1



West Facing
3 BHK
1,500 sq.ft.

Flat 4 Block 1



West Facing
2 BHK
1,100 sq.ft.

Block 2



Block 2



AREA STATEMENT: BLOCK 02

Total Plot Area : 1,150 sq.yds.
 No. of Floors : Parking + 5 Floors
 *5% TOT-LOT Area

Setbacks : 3 m & Sides: 4 m
 Area of Each Floor : 6,900 sq.ft.
 Area of 5 Floors : 34,500 sq.ft.
 *25% Common Area

Flat 1
Block 2



East Facing
2 BHK
1,150 sq.ft.

Flat 2 & 3
Block 2



East Facing
2 BHK
1,150 sq.ft.

Flat 4 & 5
Block 2



West Facing
2 BHK
1,150 sq.ft.

Flat 6
Block 2



West Facing
2 BHK
1,150 sq.ft.

Block 3



Block 3



AREA STATEMENT: BLOCK 03

Total Plot Area : 3,085 sq.yds.
 No. of Floors : Parking + 5 Floors
 *5% TOT-LOT Area

Setbacks : 3 m & Sides: 5 m
 Area of Each Floor : 17,520 sq.ft.
 Area of 5 Floors : 87,600 sq.ft.
 *25% Common Area
 *10% Deviation

Flat 1
Block 3



East Facing
3 BHK
1,580 sq.ft.

Flat 2
Block 3



East Facing
3 BHK
1,600 sq.ft.

Flat 3
Block 3



East Facing
2 BHK
1,150 sq.ft.

Flat 4
Block 3



East Facing
3 BHK
1,600 sq.ft.

Flat 5
Block 3



East Facing
3 BHK
1,570 sq.ft.

Flat 7
Block 3



East Facing
2 BHK
1,150 sq.ft.

Flat 6
Block 3



East Facing
2 BHK
1,150 sq.ft.

Flat 8
Block 3



East Facing
3 BHK
1,530 sq.ft.

Flat 9
Block 3



West Facing
3 BHK
1,600 sq.ft.

Flat 11
Block 3



West Facing
3 BHK
1,390 sq.ft.

Flat 10
Block 3



West Facing
3 BHK
1,590 sq.ft.

Flat 12
Block 3



West Facing
3 BHK
1,600 sq.ft.

Block 4



Block 4



AREA STATEMENT: BLOCK 04

Total Plot Area : 1,193 sq.yds.
 No. of Floors : Parking + 5 Floors
 *5% TOT-LOT Area

Setbacks : 3 m & Sides: 4 m
 Area of Each Floor : 6,300 sq.ft.
 Area of 5 Floors : 31,500 sq.ft.
 *25% Common Area

Flat 1
Block 4



East Facing
2 BHK
1,100 sq.ft.

Flat 3
Block 4



West Facing
3 BHK
1,500 sq.ft.

Flat 2 & 3
Block 4



East Facing
2 BHK
1,100 sq.ft.

Flat 4
Block 4



West Facing
3 BHK
1,500 sq.ft.

Project Highlights

Nearby Educational Institutions

- 📍 Fusion International School
- 📍 CREO International School
- 📍 Ingenium World School
- 📍 Surya Global School
- 📍 Kidzonia International School
- 📍 Bachpan Play School
- 📍 Krishnaveni Talent School & many more...

Nearby Shopping Complexes

- 📍 Reliance Smart Point
- 📍 MORE Supermarket
- 📍 GSM Mall & Multiplex
- 📍 KLM Fashion Mall
- 📍 RS Brothers
- 📍 Sri Devi Theatre & many more...

Nearby Hospitals

- 📍 Paramitha Women & Childrens Hospitals
- 📍 PRK Hospitals
- 📍 Vijaya Nursing Home
- 📍 Malakshmi Multi Speciality Healthcare
- 📍 Preeti Urology & Kidney Hospital
- 📍 Mamata Academy of Medical Sciences
- 📍 SLG Hospitals & many more...

Others

- 📍 Ameenpur Lake
- 📍 Painted Stork Birding Spot
- 📍 Miyapur Central
- 📍 SBI Bank
- 📍 HDFC Bank
- 📍 ICICI Bank & many more...





Location Highlights

- 📍 Just 2 mins drive from **BHEL X Road**
- 📍 Just 5 mins from **ORR**
- 📍 Just 5 mins drive from **Lingampally**
- 📍 Just 10 mins drive from **Madinaguda**
- 📍 Just 15 mins drive from **Wipro Junction**
- 📍 Just 15 mins drive from **Miyapur Metro Station**
- 📍 Just 20 mins drive from **Gachibowli**

Includes a diverse array of features and facilities.

- ❑ Gym fitness station
- ❑ Gym workout station
- ❑ Billiards
- ❑ Table tennis
- ❑ Children's indoor play area
- ❑ Badminton court
- ❑ Mini basketball court
- ❑ Children's outdoor play area with sand pits
- ❑ Elders seating area
- ❑ Security pods
- ❑ Elegant gardens with seating spaces



Amenities



EV Charging Point



TOT-LOT



Manjeera Water Provision



Lift



4X6 CCTV Surveillance



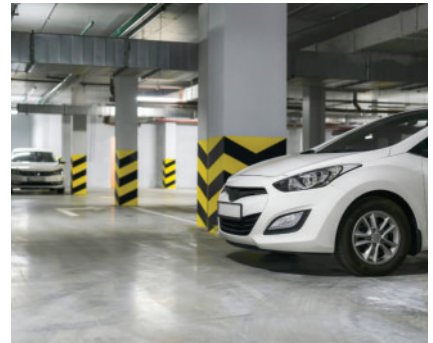
Power Backup



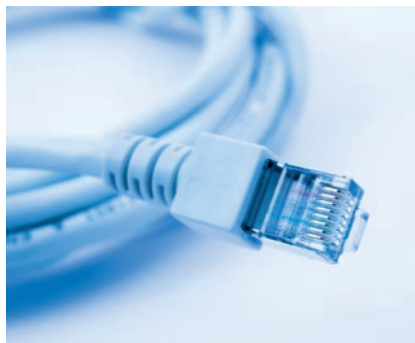
Solar Fencing



24/7 Security



Car Parking



Concealed Internet Cable



Specifications



STRUCTURE

RCC framed structure to with stand wind seismic loads



SUPER STRUCTURE

9" Thick red brick blocks for external walls

4.6" Thick red brick blocks for internal walls

INTERNAL: Plastering in CM for internal walls

EXTERNAL: Plastering in CM for external walls



WATER SUPPLY

Borewell and Provision for Municipal Water



24/7 CCTV SURVEILLANCE

Only for parking area.



LIFTS

6 Passenger lift of reputed make, entrance with front granite / tile cladding.



FLOORING

Bedrooms, Living, Drawing and Kitchen: 2X2 Vitrified Double Charged

Balconies : Vitrified tiles of reputed make with anti-skid

Bathrooms : Acid-resistant, Anti-skid vitrified ceramic tiles of reputed make

Corridors : Granite

Staircase : Granite/Tandoor Stone

Utilities : Anti-skid tiles of reputed make



POWER BACKUP

Reputed make generator.



PAINTING INTERNAL

Smooth putty finishing with 2 coats premium acrylic emulsion paint of reputed make over a coat of primer.

EXTERNAL

Textured / Smooth finish and two coats of exterior emulsion paint of reputed make.



KITCHEN

Granite platform with stainless steel sink, CP fittings with 2.0" Height ceramic tile dado over granite counter top.

Provision for fixing water purifier, exhaust fan and chimney.

Provision for washing machine in the utility area.



DOOR AND WINDOWS

MAIN DOOR: Teak wood frame and main door teak veneer.

INTERNAL DOORS: Teak wood frame and designer shutter with reputed hardware fittings.

FRENCH DOORS: UPVC door frames with float glass with provision for mosquito mesh.



TOILETS

EWC with flush tank of standard company make and wash basin.

Hot & Cold water mixer with shower.

Provision for **Geysers, CP Fitting** are chrome plated of standard make.

Toilets walls with **Glazed Ceramic Tiles** with 7 feet height.

TELECOM, CABLE TV AND INTERNET

Telephone provision in MBR and Drawing area.

Provision for internet connection in each flat.

Provision for cable connection in master bedroom, children's bedroom and living room.

PLUMBING

An internal and external waterline of PPR/UPVC/CPVC.

All damage fitting and line are of PVC standard make.

Power plug for cooking range, chimney, refrigerator, microwave, mixer and grinders in kitchen.



Come and experience the pinnacle of luxury living at **Vilaasam Apartments**.
 Contact us today to schedule a personalized tour and discover the home you've been dreaming.

Project Executed by:



Site Office

Plot No. 33,
 Royal Homes, Behind
 Fusion International School,
 Beside Sai Villas, Ameenpur,
 BHEL, Hyderabad 502 032



Corporate Office

#302, 3rd Floor, Supriya Estates,
 Behind MJR Magnifique,
 Prashanthi Hills, Raidurgam Circle,
 Hyderabad 500 032 Telangana.

DISCLAIMER: All rights reserved is a copyright formality indicating that the copyright holder reserves, or holds for its own use, all the rights provided by copyright law.